



Lotus Sunrise Designs



Lotus Sunrise creates hand painted textiles that are original art pieces. Each design is an inspiration drawn from the living pulse of life, resonating a spirit of its own.

The artist presents an array of varied collections that are refreshing and strikingly different. In addition to creating the art, Lotus Sunrise transforms it into decorative soft furnishings, serving as functional art pieces, while beautifying the home or workplace.

Choose from the latest collections, especially created for wall decor, cushion covers or tablecloths, produced on 100% natural (unbleached) calico.

Each collection begins with an inspired theme to create a series of designs. The artist spends extensive time researching and studying

reference material to assist the creative flow and artistic invention. The individual design starts as a sketch of raw inspiration, transferred into images and shapes, thus creating a unique arrangement. A palette of colours, carefully selected and blended, are added to the images and finished with line work, outlining and defining the patterns and motifs with character and life.

Lotus Sunrise Designs fuse the oriental culture of line art with traditional and non-traditional subjects, creating a range of designs that express aesthetic sentiments...universally.

For more information, please see our website:
www.lotussunrise.com

All designs are hand painted. So each piece is unique.



Collection: Island of Wonders - Island Day
Available as a wall hanging, table cloth or cushion cover.

Island of Wonders

To begin your journey through the 'Island of Wonders' Collection, we dive below the waters that surround this magical paradise, in the blue sapphire ocean that is teeming with brilliant sea life.



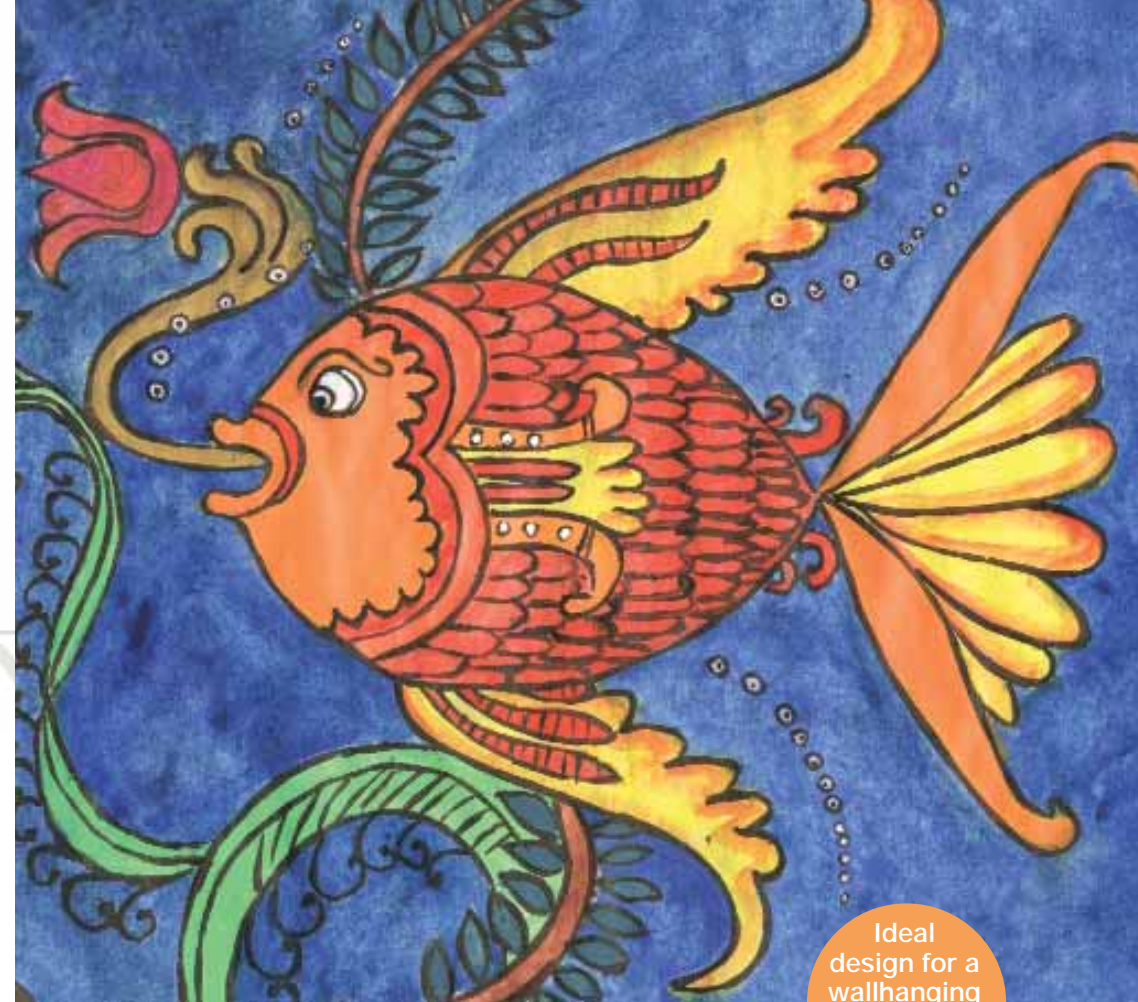
Tenth Incarnation

We start with an underwater scene of a fish motif in vibrant shades of vermilion, gliding serenely through water plants and lotus that are seemingly alive with rhythmic movements of the ocean. Adding a finishing frame for this auspicious creature is a border of intricate line work of aquatic creepers and flowering lotuses flowing in infinity.

All designs are hand painted. So each piece is unique.

Fauna's Bounty

A bright and beautiful burst of colour, as a parrot perches to contemplate this fragrant delicacy in full bloom, nestled among the leaves. The birds are just one of the many beautiful children of mother nature. They are entertaining and refreshing to watch, when a pair or a whole flock perch in trees loaded with a bounty of blossoms to feast upon. We are but onlookers of another world, observing the frenzy and social chatter of these delightful creatures.



Collection: Island of Wonders - Tenth Incarnation
Available as a wall hanging, table cloth or cushion cover.

Ideal design for a wallhanging
But also available as cushion covers or table cloths

In Hinduism and Buddhism, it is believed that the tenth incarnation of the God Vishnu was that of a fish once. According to the epic, the fish called Matsya, saved Manu (equivalent to Noah) from the great flood. In addition, a demon had stolen sacred texts from Brahma, the God of original creation, and hid the scriptures at the bottom of the ocean. Matsya, the fish incarnation, retrieved the sacred texts and returned them to Brahma.

Island of Wonders

A new day dawns and your senses are alive with the sound of the waves and bird calls. The aroma of salt air and sweet perfumes of tropical and exotic flowers waft in the warm balmy breezes. Lush tropical fruits hang like jewels from their trees, ready to be picked, promising a delight for your palate, fit for a king and his queen. But here every man is a king, and woman a queen.



Island Day

A collage that brings together all the tropical hues of island life. Starting at the top, a soft sunrise provides the backdrop for a gentle awakening of hibiscus flowers, unfolding their deep pink petals. On the right, our life giving star climbs the blue topaz sky, smiling and extending its golden rays of sunshine to start and bless another day in paradise. At the left, ocean-kissed palm trees bear their plump ripened fruit of coconuts as the palm leaves sway in the sigh of a gentle sea breeze. Flanking the bottom of the design is an ornamental vase, called a prosperity pot, symbolising good luck and a life of plenty. Enhancing this omen is a profusion of creepers and leaves adorned by stylised hibiscus flowers, as a betoken that a piece of paradise is yours every day.

All designs are hand painted. So each piece is unique.

Pacific Narilata

This design represents a motif based on a mythical flower with its origins in the Himalayas. Used widely in Sri Lankan art, a Narilata is an artist's impression of this flower. Here the flower is based on the female body from the waist up, while the bottom half is consisting of leaves and creepers that cradle the flower. A bare breasted beauty adorned with an island blossom in her hair, serenely gazes out from her enchanting place in the universe, flanked by delicate pink frangipanis while holding offerings of tropical fruits.



Oceania Jewels

A simple daily scene of any island lifestyle. A village fisherman out to sea, with an afternoon sun sending forth his remaining light of the day. Tall palms slowly turning into elegant silhouettes along the shoreline. While below the waves, a brilliant catch of the day discovers the fisherman's hook. Lotus buds and creepers create an underwater garden along the ocean floor, while a wandering starfish stops to rest among the sea leaves.



Punkalasa

A traditional symbol in Sinhalese art is the Punkalasa or prosperity pot. A sign of good luck and abundance, represented by an ornamental pot with flowers, creepers and mixed with animal motifs. Created especially, this Punkalasa is adorned with tropical blossoms, including the yellow frangipani for happiness, and two young Narilata buds (only petal framed faces are seen) to inspire the heart. Twin fish are added to bless one's daily bounty and good health. Nearing the base of the arrangement, are colourful shells that focus protective and harmonious energies in your home for a long, happy and prosperous life. Finally, this blissful Punkalasa is completed with a stylish border of aquatic foilage following a rhythmic pattern and sealed with shell motif amulets.



Blossoms

All designs available as a wall hanging, table cloth or cushion cover.

Like jewels of summer, these blossoms emit their sweet and delightful perfume upon the season's balmy air, as their petals open gracefully.



Frangipanis of Happiness

Delicate blends of yellow, vermillion and magenta imbue these frangipani motifs that express a joyful poetic song, harmonised by rhythmic leaves and creepers. Frangipanis are beautifully made into colourful leis in many islands of Polynesia and in Asia, given as a token of welcome and wishes for happiness, good health, fortune and friendship.

For more information, please visit our website: www.lotussunrise.com

Heavenly Roses

Standing in elegant grandeur, a pyramid rises above mystic sands. Encased are sacred roses, red-pink in hue, fragrant as the musk of paradise. Rich creeper work nestle these majestic flowers, as they climb towards the heavens. Stylised golden butterflies flank the pyramid peak, their wings reflect the shimmer of the stars above that guard the gates to the gods of Pharaoh. In ancient times, the deepest red roses were chosen to make a precious perfume called rose water. This sweet and exotic fragrance became an expensive luxury, highly sought by maharajas and sultans alike. Divine in beauty and perfume, the rose also became a universal symbol of love.



Hibiscus Queen

Bright tropical motifs of hibiscus blossoms, laid in four corners like flower goddesses, unfold their luxurious petals of sunburst yellow and ruby red centres. Interlacing jungle creepers create a flow of life from flower to flower, and fireflies, seen as glowing tiny points of light, against a velvety midnight background of a warm summer's eve, follow the rhythmic path of the creeper work. At the hub of this enchanting world is a splendourous hibiscus queen nestled among her foliage as though upon a throne, gazing out serenely to her royal court. The hibiscus flower symbolizes delicate beauty and according to ritual, young maidens in Hawaii and Tahiti, decorate their hair with hibiscus blossoms to show to the young men that they are ready for courtship.



All designs are hand painted. So each piece is unique.

Peaceful Lotus

In Buddhist art, the lotus flower represented the birth of Buddha. Concepts such as prosperity, peace, spiritual purity and wisdom are symbolised by the lotus. In a diamond frame, this eloquent white lotus and buds gleam with a pearlescent hue, bathed in warm sunlight, while being cradled by graceful lotus leaf and delicate vines. Guarding each side of the diamond pond and the outer corners are stylised lotus motifs with faithful creeper and leaves. This beautiful and perfect blossom is revered and honoured in name and as patron flower of 'Lotus Sunrise Designs', paying respectful homage to the artist's great grandfather's Buddhist faith.



Seaside

A golden sunset shimmers upon a languorous evening ocean tide, as gentle waves roll into a quiet and serene cove. A treasure from King Neptune's bounty is left on the sand by the hands of the waves, awash with ocean droplets glittering in the last crimson and gold rays of the sinking sun.



Shell Cove

A mystical conch shell, ambient of the gods of the waters and associated with the moon, is detailed here with its mysterious folds, ridges and a stylised spiral. A spray of sea leaves and petite blossoms patterned with inner pineapple line work, frame the conch, upon a pillow of ocean kissed sand. Placed to one side, is a decorative border of creeper and conch shell motifs turned on their other side.



Tree of Life

Orange and lemon tints spread across the celestial backdrop as the sun god meets his rising chariot. Rhythmic lines capture the motion of these elegant palm fronds swaying in the cool breezes, blowing tenderly across the sea, from the sweet breath of the wind cherubs. Each leaf is highlighted with silvery pearlescent outlines, creating a rich visual texture. Nestled high in their cradle of the palms are clusters of coconuts. Encircling the palms are five interlinked rings forming a unique circular composition. Each ring is decorated with a flowing pattern of the wave's curves. The design's centre represents a bird's eye view of an island below, where each palm tree takes root and is lifted up by their tall curving trunks.

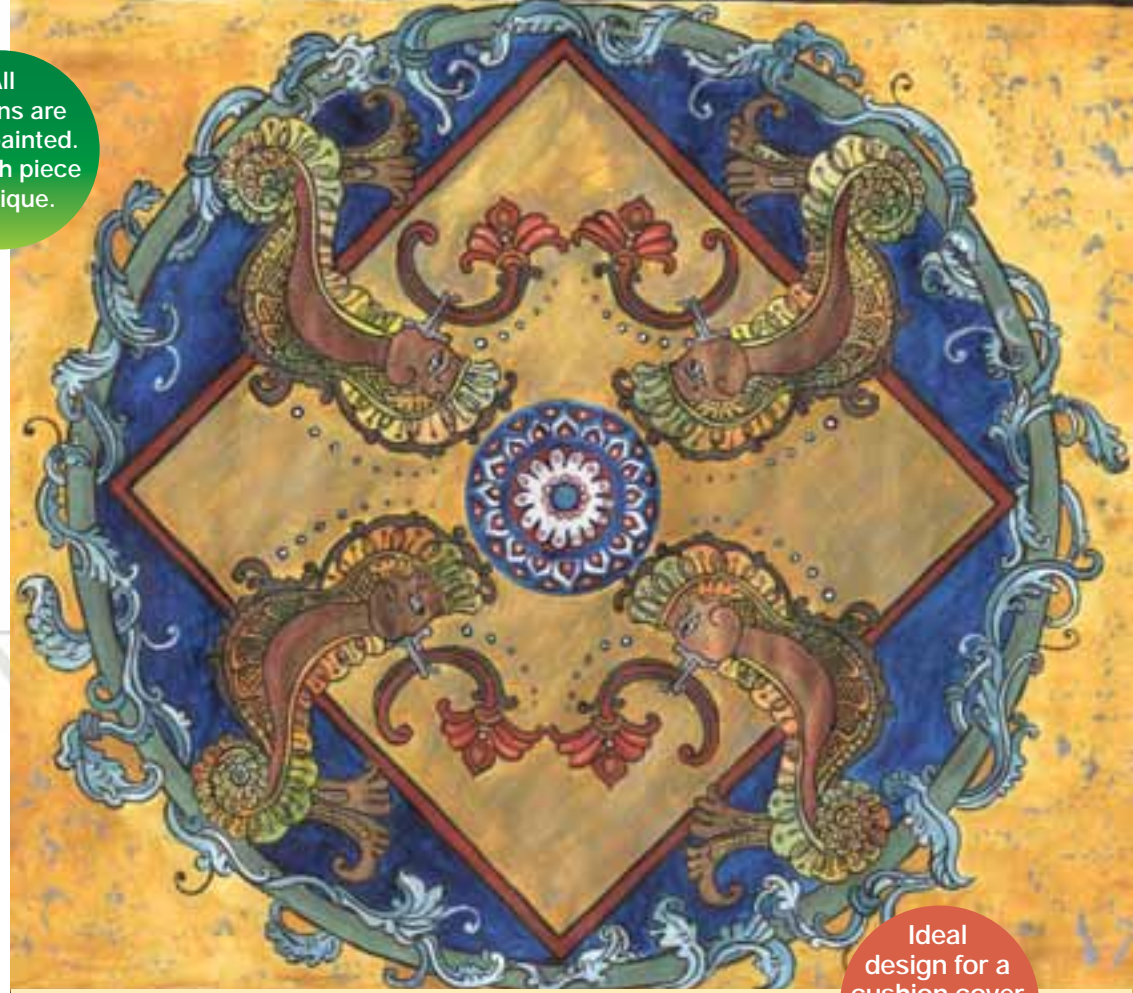


Dolphin Spirit

Two stunning dolphins grace this design, beautifully stylised with an aura of nobility. Bejewelled with ornaments of gold (symbol of light, fire and life); and pearls (symbol of purity, wisdom and immortality), elegantly fashioned with an exotic flare. The royal pair swim in serene compatibility, gliding between charming water plants and flamboyant sea flowers, that joyfully open into bursts of flame-red jewels. Dolphins symbolize virtue, as well as safety and speed associated with ocean travel. According to Greco-Roman myth, the dolphin is a noble fish that helped to save shipwrecked victims and also guide souls to the world beyond. Adding support to this design's meaning, are bright and uplifting starfish motifs flanking the corners. The starfish signifies guiding faith and the power of undying love.

For more information, please visit our website: www.lotussunrise.com

All designs are hand painted. So each piece is unique.



Collection: Seaside - Seahorse Frescoe
Available as a wall hanging, table cloth or cushion cover.

Ideal design for a cushion cover

But also available as table cloths or wallhanging

Seahorse Frescoe

Beneath waters that sparkle like blue topaz, Poseidon's abode thrives with a magnificent and magical kingdom. Deep in the fathoms on the ocean floor, remains an ancient temple, lying undiscovered since the mists of time. Colourful fish of all kinds, dart and glide in and out and between the mystical ruins, like a vibrant city. In the heart of the temple, a fresco adorns a sheltered wall, undisturbed for aeons, yet still an entity ever present with life. Delicate seahorses, stylised elaborately in graceful poise, shine with rainbow hues. Their serene faces, aglow with the soft light of ancient gilded gold leaf, behold a captivating ambience of the mystique and the divine, in their eyes. A sacred blossom is gently held by each seahorse, perhaps as an offering to the deities of the ocean. While at the centre of the fresco, an open flower reflects meaning of an open heart through which to receive wisdom. Turquoise shades further signify homage to the faithful heart. Aquatic creepers encircle the design, their undulant leaves seem to swim, journeying for eternity. Greek and Roman myths both associate the seahorse as the mount of Poseidon and Neptune, gods of the ocean. The seahorse also has been known to symbolize bravery at sea.

About the artist

The artist behind Lotus Sunrise was born from a mixed racial heritage. One of her family roots stems back to Sri Lanka, the source from where her passionate interest in Sinhalese art tradition developed, over the last nine years.

For many years, the artist has been based in the Oceania region, where a tropical atmosphere gave rise to her website's first collection of designs. Using the unique manner of stylised line work adapted from the study of Sri Lanka's age old native art, she applies this form to the many subject matters she has been inspired to create designs with.

Fine, artistic and rhythmic lines breathe life into patterns and motifs to represent flora and fauna (both real and mythical) as well as daily surroundings and scenes. The artist lovingly produces each piece with vibrant colours from her palette in fresh, tropical, bold and flamboyant images that can be atmospheric anywhere the design's impressions transport the imagination to.

Each collection is animated with a visual journey that aims to imbue the viewer, not only with the artist's interpretation, but also with the viewer's own personal relation to the subject of a design.



Jewell Fair

All designs available as a wall hanging, table cloth or cushion cover.

Celestial Sapphires ▶

The orient tells an enchanting belief behind the star sapphire.

The legend says that the inclusions that create a star pattern in a sapphire or ruby, are three shafts of light formed by three benign spirits. Due to a small misdemeanour, they have been imprisoned in the stone. Their names translate as Faith, Hope and Destiny. Known as legendary bearers of good fortune, these three good spirits will reward their owners with success in their daily dealings, for the spirits can only observe, rather than take part in affairs of the world. Here, in a strikingly unique composition, beautiful star sapphires dance with light, capable of captivating even the most despondent of hearts. Glowing with life-giving warmth, are half-sun motifs that

shimmer watchfully in their celestial domain. Pineapple line work manifests throughout the design, strengthening the fruitfulness of the sapphires' good omen. Adding to the quilt-like pattern, are inlaid corners of delicate Egyptian-inspired lotus motifs, mirrored in a heavenly hue, while gold flowers resembling six-pointed stars, offer meaning of universal balance. The star sapphire's healing attributes include curing fever, skin problems, enhancing longevity and youthful appearance, with blessings that confer tranquility, peace of mind, happiness, fidelity and spiritual enlightenment. In addition to the spiritual symbolism and exquisite beauty of this gem, Eastern fable also tells that star sapphires are the divine sparks that fell to Earth from the Star of Bethlehem.

The Shah of Rubies

Fabled in the East as the drop of blood from the heart of Mother Earth, this design exalts the legendary ruby in a rich ornate composition, radiating its fiery and passionate brilliance. Resting in the warm glow of a unique and intricate gold setting, this majestic gem is accompanied by sparkling clusters of rubies, each holding a fire and mystery of their own. Offsetting the throne of the Shah, are dazzling lotus-shaped cut rubies, set upon golden stems, cradled by graceful leaves.



Ideal design for a tablecloth

But also available as cushion covers or wallhanging

All designs are hand painted. So each piece is unique.



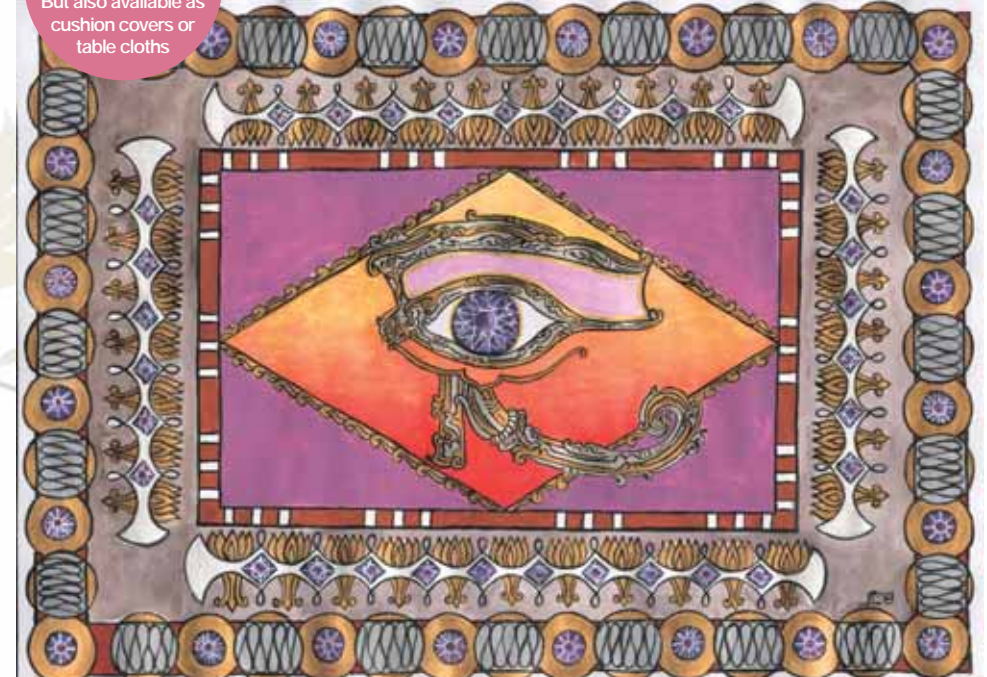
Jewell Fair

All designs available as a wall hanging, table cloth or cushion cover.

All designs are hand painted. So each piece is unique.



Ideal design for a wall hanging. But also available as cushion covers or table cloths.



Fountain of Emeralds

In this design, an ornamental fountain encrusted with glittering emeralds, is eternally watered by the pots of wisdom and joy. Twin feathered creatures, reminiscent of the mythical griffin, support the watering pots, gazing protectively over the majestic fountain with soothing emerald eyes. Ancient tales tell that emeralds were found in the nests of griffins. And being a creature that was half eagle and half lion, a mere mortal in want of the precious stones, would have been no match for their mighty ferocity. However the

griffin was also a sacred guardian to the Greek gods Apollo and Athena, and therefore became known as a symbol of wisdom. Further glorifying this evergreen stone, associated with spring, rain and fertility, is a border of channel-set emeralds, twinkling with rich, velvety tones. Centered above the fountain is a superior emerald jewel, inviting the eye of the beholder to gaze into it, for it is said that emeralds can give their owners the gift to foretell the future.

Mystic Amethyst

An auspicious design, bearing the mystical Egyptian-inspired wadjet eye (or Eye of Horus) is recreated here in stylised line art. Placed within the ancient magical symbol of luck and protection of the sky god, is an amethyst that pulsates with a cosmic sparkle, gazing in silent vigil. Rows of lotuses touched with gold, incorporated with petite amethysts create a rich filigree border effect. Followed by an outer frame of round-cut amethysts glistening like goblets dipped in the juice of grapes, are imbedded in

gold cabochons. Known as the stone of sincerity, peace and humility, the amethyst also amplifies psychic abilities and aids meditation. Healing properties are attributed to curing drunkenness, cancer, cleansing the blood and assisting mental disorders, hence the beautiful purple gem is attuned to the crown and third eye chakras, inspiring second sight.

Shaken not Stirred

Daiquiri Dream ▶

Swirls of stylised plump, red berries and romantic frozen strawberry daiquiris, are encompassed in eye catching circular design. This fruity pre-dinner drink, is based on rum, the spirit famous for the West Indies. Combined with flavours such as strawberries, it is served in large goblets with lots of ice. A palatable cocktail for lovers.

Braided-like patterns extend from the circular frame creating a textured look, like the island craft of decorative weaving. Behind, dreamy clouds float across a lover's sky, tinted with soft powder blues and pinks that could have been blended by the hand of Cupid, himself.



Midnight Martini

Contrasting with the background, are zesty lemon peels and pimento olives playfully showering down, to add the appropriate garnishing touch. Twin images of moon crescents, set the mood for enchanting, secret late night rendezvous, as they sail high above the earth along their lunar path. Dating from the 1920's, the cult of the cocktail has remained a popular invention, with its enormous variety increasing in styles and flavours around the world.



Club de Colada

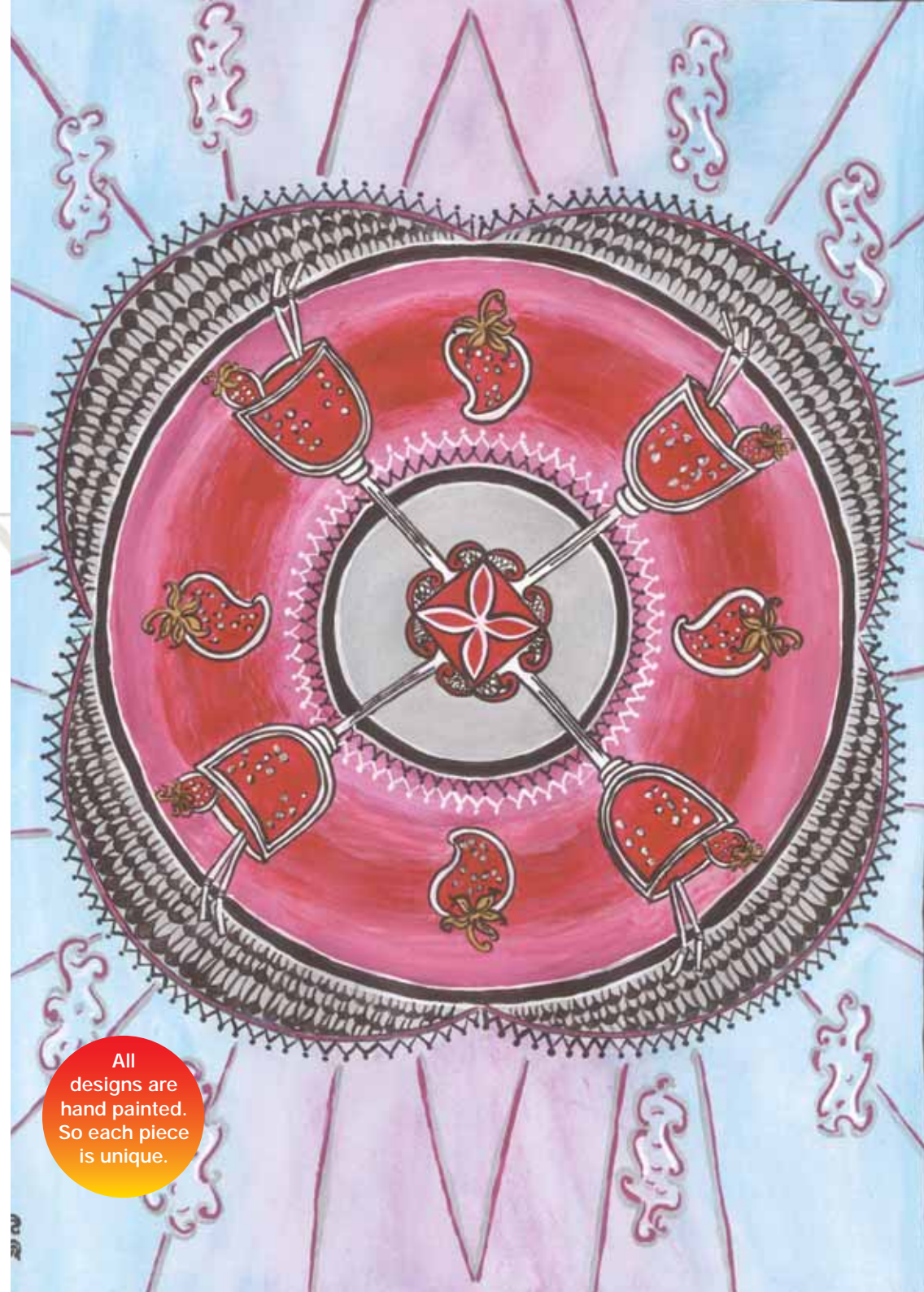
Delicate motifs of stylised pineapple spears or leaves, further extend the flavour of this design, matched with the sweeping hues of this fruit highlighting the background. While cool shades of lush green beneath pineapple line work, provides a window frame into Club de Colada's warm tropical afternoons by the pool, with the nectar of paradise.



Imperial Grasshopper

An elegant old style champagne saucer takes the limelight, detailed with a delicate cut glass pattern of leaves, that nestle a creamy indulgence, fit for an emperor.

Ruby red maraschino cherries and sweet mint leaves offer a tempting sight for our grasshopper motif, created in oriental line tradition. Finishing with imperial excellence, alike to Ming Dynasty designs, is a lotus petal-shape frame, that captures swirling intricate patterns and stylised mint leaves in the corners.



All designs are hand painted. So each piece is unique.

Call of the Wild

La Leopard Jumeaux ▶

An African look lends inspiration to the spirit of these great cats of the jungle.

The design name, in French, translates as "The Twin Leopards". Here they are depicted comfortably resting, watching in vigil upon high branches of jungle trees, that offer coolness from the African heat, with dazzling African blue skies overhead, as seen in the background. Bright, but subtly variegated shades of red and vermillion, blanket beneath a bold pattern of elegant stripes and white pearl-like dots, that create the border.

Contrasting in the border design are corner seals, using geometrical shapes of diamond-squares and triangles, impressing the border's entirety with an African art style. Leopard skins are commonly known to denote royalty, and were, and are still worn by African royalty, and additionally worn to ward off danger.

This design portrays the leopard's natural grace and beauty, poised in a colourful and vibrant setting, bringing a little of the wild indoors.

Eliya

Royal watching can be quite a delight, when you are fortunate enough to have caught sight of the grace, charm and dignity of a royal.

Eliya, which means Elephant in Sinhalese, is the first design created for this new collection, and is very much a royal and revered animal indeed! Imagine coming close to majestic walls, tipped with gold, of a Maharaja's palace, where you sneak a peak into the splendid palace grounds and it's royal animals that roam peacefully. Pushing carefully aside large leaves of the luscious foliage, stylised in Lotus's adopted creeper work, bordering the outskirts, to reveal a magnificent creature standing in all his regal splendour.



The Kings own favourite pet elephant, Eliya, is adorned here in rich ceremonious ornate silks, gold and precious jewels. Ivory white tusks gleam with three decorative gold bands, showing his place as the Maharaja's prize gentle giant. He wanders in his special reserve, grazing upon coconut leaves, and many delicious treats of the royal park. The Elephant

signifies qualities such as patience, wisdom and chastity. Also, because of it's size and strength, the elephant symbolizes power and according to Buddhist tradition, a white elephant is the symbol of royalty.

So for those with a taste for regal things, here's a very tasteful design to grace your home (or palace!), adding a touch of royalty and splendour

For more information, please visit our website: www.lotussunrise.com

Ideal design for a wallhanging

But also available as cushion covers or table cloths

All designs are hand painted. So each piece is unique.



Wallhanging options

Small	21x30cm	\$29
Medium	42x59cm	\$49
Large	59x84cm	\$89
Xlarge	94x136cm	\$189
XXlarge	110x157cm	\$249



The Leopard is considered as the Great Watcher, due to their spots resembling many eyes. They symbolize courage and untamed instincts, and in African culture, the Leopard is revered as a creature that represents the light of the morning sun. Aply considered so, as this big cat can certainly run with the speed of light, when in pursuit of it's prey!

Call of the Wild

All designs are hand painted. So each piece is unique.



Lælaps

Lotus Sunrise borrows a touch of Greek art in this design. Revering a creature of the wild, capable of great obedience, when trained. Man's loyal companion, was immortalized in the heavens by the ancient Greeks, in the constellation Canis Major (The Great Dog).

An elegant great canine is styled here with a shiny coat and poised with an intelligent look. Wearing a golden collar with a bejewelled enhancer, perhaps awarded to him, by Zeus himself. A dreamy sapphire sky at dusk, peppered with the first appearing twinkling stars of the evening, lends itself as a backdrop.

Grecian style ivy, associated with immortality, decorates the upper part of the circular design. The artist mixes the ivy with deep red lotus blossoms, creating a fantasy look. Motifs of Lælaps' jeweled pendant, flank the outer corners of the frame, which encases a flood of sun-like brilliance of whirling, vibrant yellow- orange shades.

Pavo

A very proud and imperial peacock graces the fourth composition in this collection. With all his feathers in full plume, and wings aflutter, he holds a lovely exotic bloom in his beak, as the flower and it's leaves trail down delicately behind him.

A simple form of inspired Moroccan patterns, in cool turquoise and passionate magenta, that one might see in homes and beautiful courtyards in Marrakech, create the borders. Named also after a constellation, Pavo, the peacock was introduced at the end of the 16th century by Dutch navigators. Pavo is one of several celestial birds in the same area of the southern night sky, which include Tucana, Grus, Apus, and Phoenix.

One can't help, but feel admiration for their brilliant feathers and colour! A majestic design to bring exotic opulence to any home.



Options available

All designs lend themselves to be fashioned into cushion covers, wall hangings and tablecloths.

Simply select your preference of design from any collection, then select the format of soft furnishing you wish your custom made art piece to be made in. The artist will then create your piece based on your choice of design, format style and size (sizes are listed at right).

Wall hangings

Wall hangings are created based on a reproduction of the original design reference, but on a scale according to your selected size. Wall hangings from medium size to the XX large size are finished with a fabric backing and fabric loops for hanging on a dowel or rod. The small size is neatly trimmed and is more appropriate for displaying in a frame.

Cushion covers and Tablecloths

Cushion covers and tablecloths are created in a design layout identical, or near to the original design reference and scaled to your selected size. Cushion covers come finished with decorative tassels on corners. Tablecloths may be crafted using a slight variation of a design's composition, but still keeping with the design's originality, to create a layout more befitting for a table piece. Tablecloths are finished with a neat hemline.

Creation process - anticipated delivery times

Each order is custom made to the individual's choice of design and size, not pre-mass produced. Therefore, the element of time is needed to create a quality hand painted piece, and to retain the tradition of old world style and charm in custom made art. Delivery may take up to 2-8 weeks from the date of a placed order (depending on the artist's workload).

If you would like any further information, please contact us. Details can be found on the contact page of our website, www.lotussunrise.com

WALL HANGINGS

Small	21x30cm	\$29
Medium	42x59cm	\$49
Large	59x84cm	\$89
Xlarge	94x136cm	\$189
XXlarge	110x157cm	\$249

CUSHION COVERS

Small	30x30cm	\$29
Medium	40x40cm	\$39
Large	60x60cm	\$59

TABLE CLOTHS

Small	90x90cm	\$69
Medium	130x180cm	\$89
Large	147x230cm	\$109

Please visit our website, www.lotussunrise.com to read articles about our designs or to place an order.